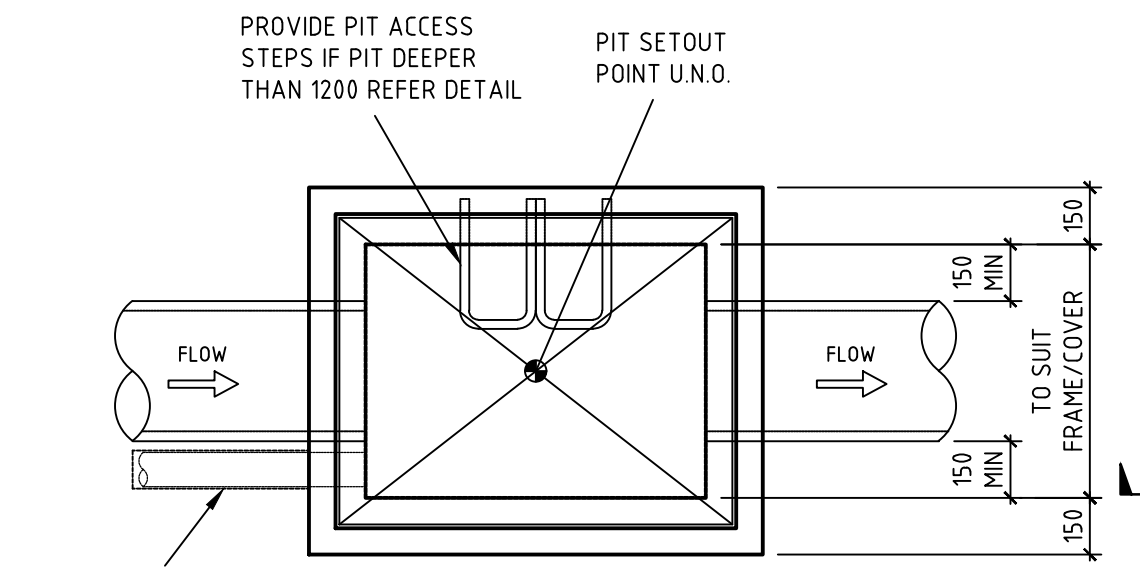


SECTION



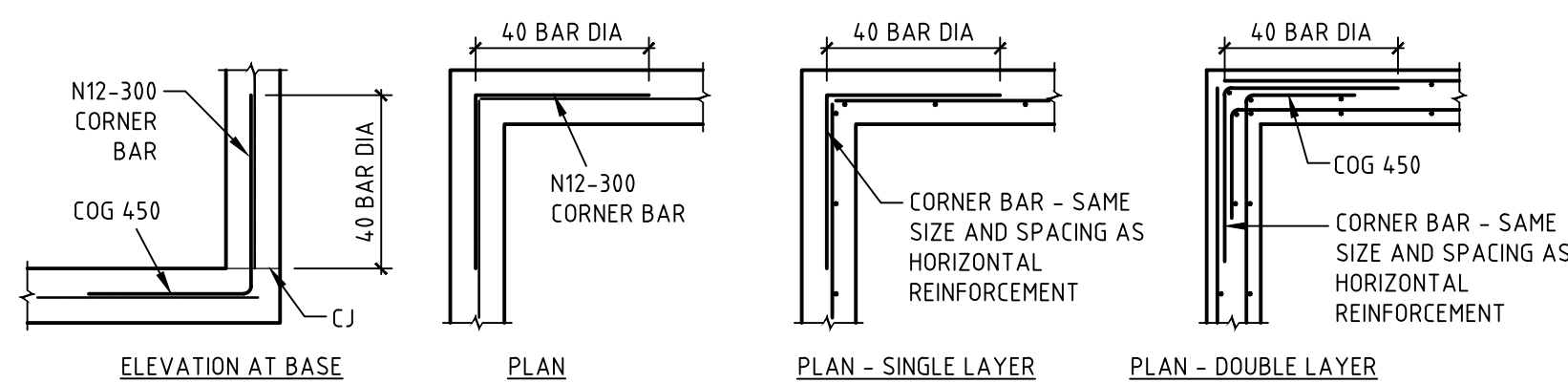
PLAN

SURFACE INLET/JUNCTION PIT DETAIL

SCALE 1:20

STORMWATER PIT NOTES

1. CONCRETE TO HAVE A MIN. COMPRESSIVE STRENGTH (F_c) OF 25 MPa AT 28 DAYS.
2. REINFORCEMENT NOT REQUIRED IF DEPTH OF PIT IS LESS THAN 1000mm. PITS GREATER THAN 3000mm DEEP TO HAVE WALL AND BASE 200mm THICK REINFORCED WITH N12-250 EACH WAY EACH FACE WITH CONCRETE STRENGTH F_c = 40 MPa.
3. PROVIDE STEP IRONS AT MAX 350mm CTRS IF DEPTH OF PIT EXCEEDS 1200mm. IF REINFORCING FABRIC IS TO BE USED REFER TO WALL AND CORNER DETAILS.
4. PRECAST PITS ARE TO GENERALLY COMPLY WITH THESE DETAILS.
5. PRECAST PIT MAY BE USED SUBJECT TO ENGINEERS APPROVAL.
6. ALL PITS TO BE LOCKABLE.
7. FINAL INTERNAL PIT DIMENSIONS ARE TO COMPLY WITH AS 3500.



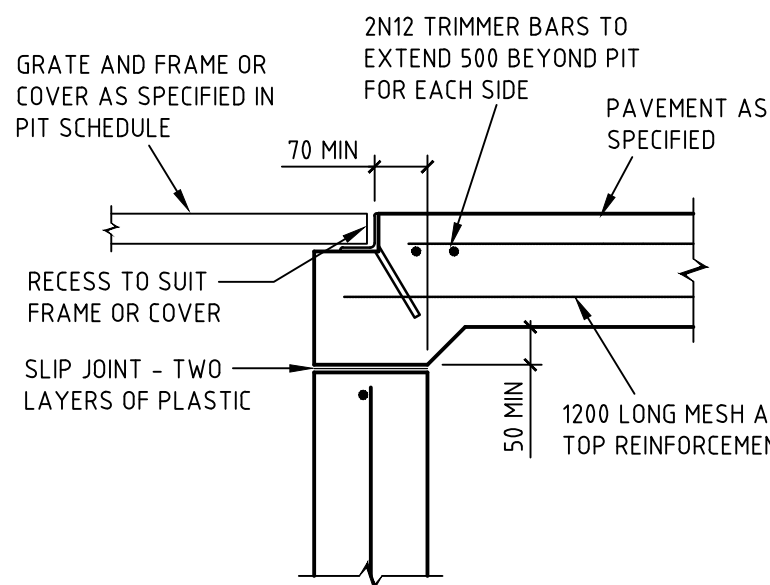
FABRIC

REINFORCEMENT

PIT CORNER DETAILS

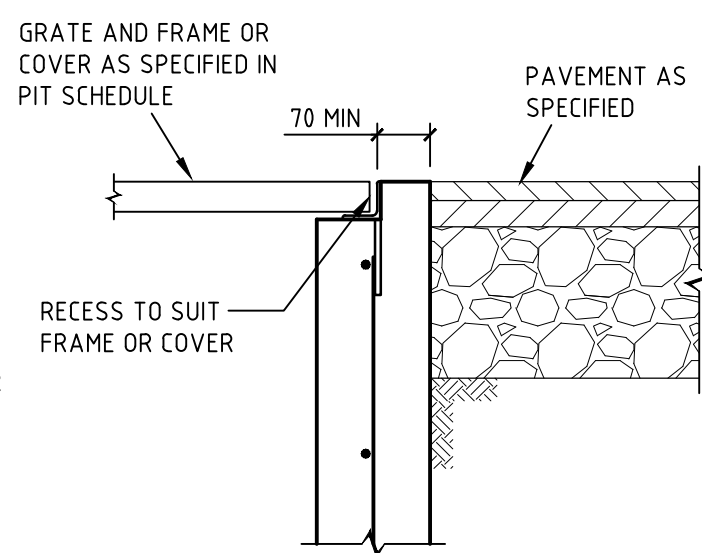
SCALE 1:20

NOTE: DESIGNER TO VERIFY EXTENT OF DETAILING



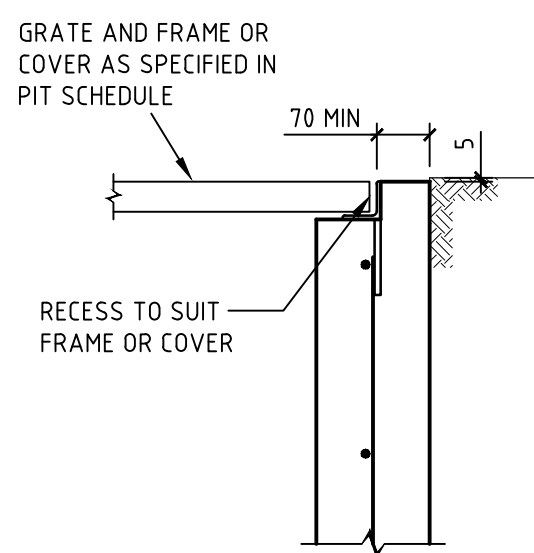
DETAIL A

SCALE 1:10



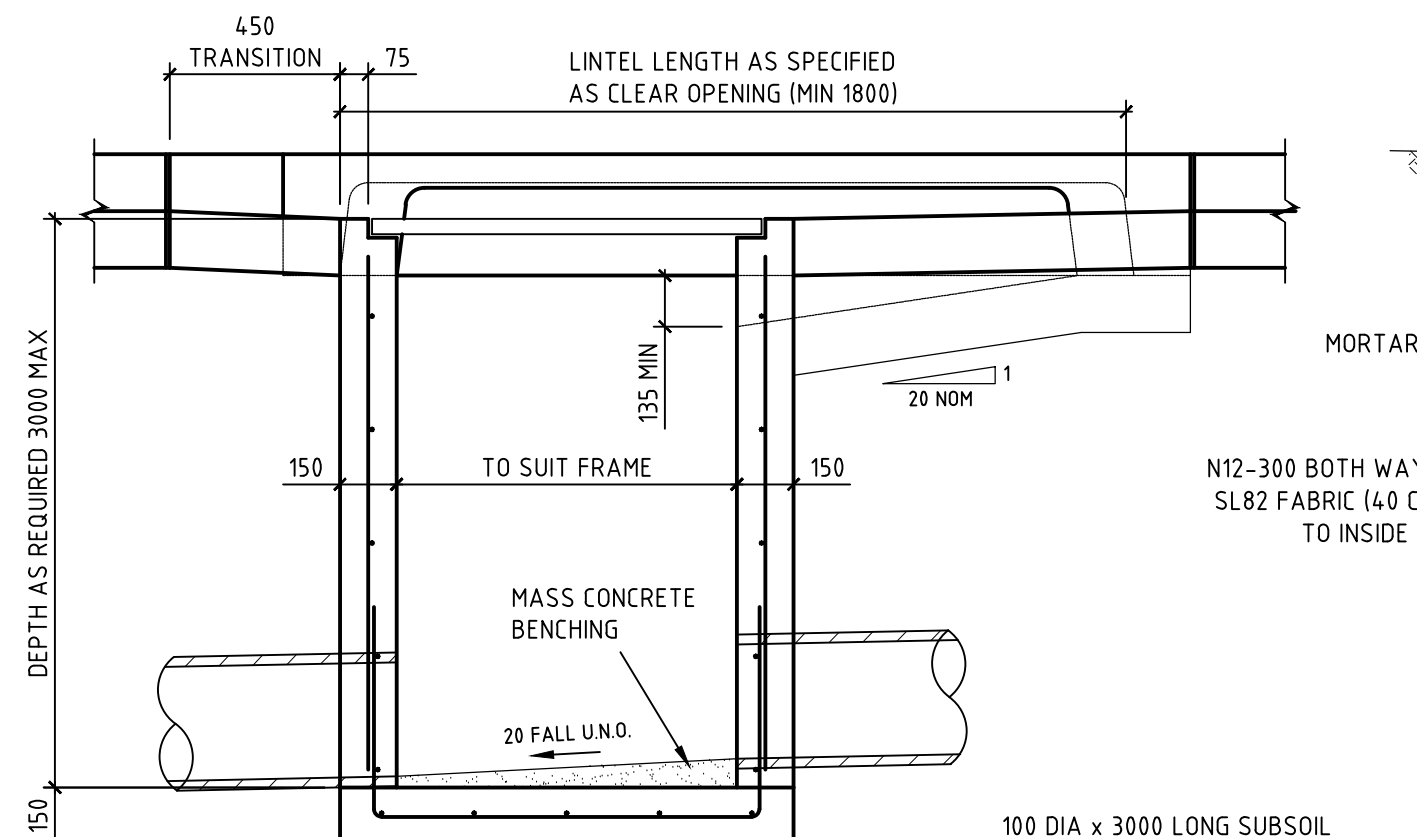
DETAIL B

SCALE 1:10

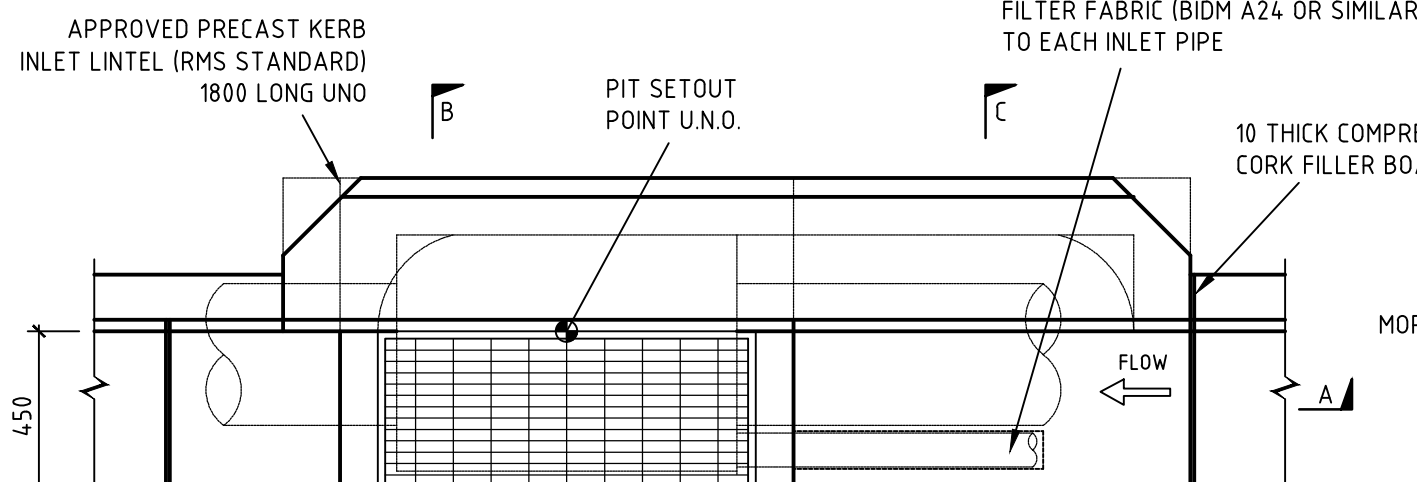


DETAIL C

SCALE 1:10



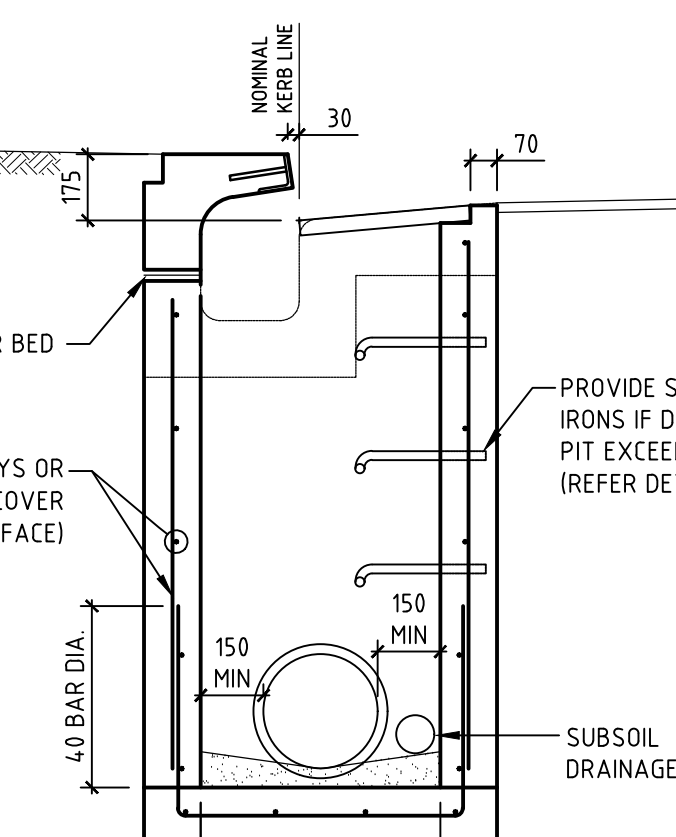
SECTION A - A



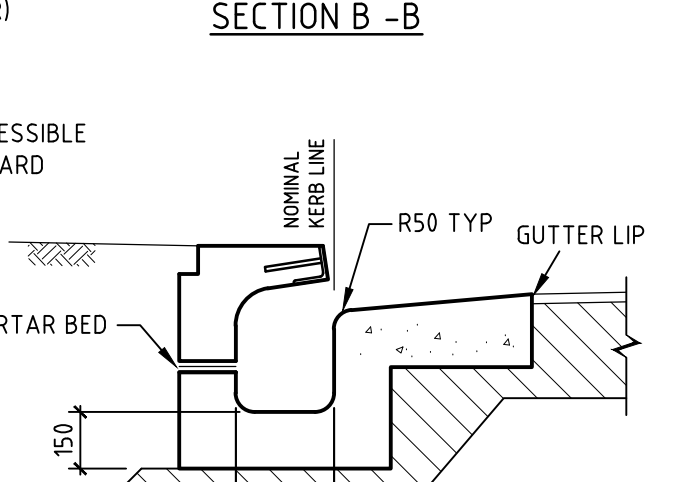
PLAN

KERB INLET PIT DETAIL

SCALE 1:20

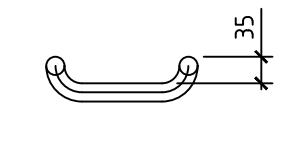


SECTION B - B

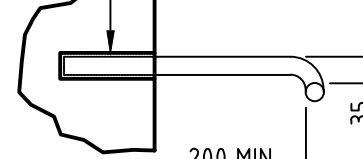


SECTION C - C

DRILL 30mm DIA HOLE x 120mm DEEP AND EPOXY INTO WALL WITH EPOXY MORTAR EQUAL TO EPIREZ 633 (NON SAGE) - IN PRECAST PITS, DEPTH OF EMBEDMENT IS TO BE IN ACCORDANCE WITH PIT MANUFACTURER'S DETAILS



FRONT ELEVATION

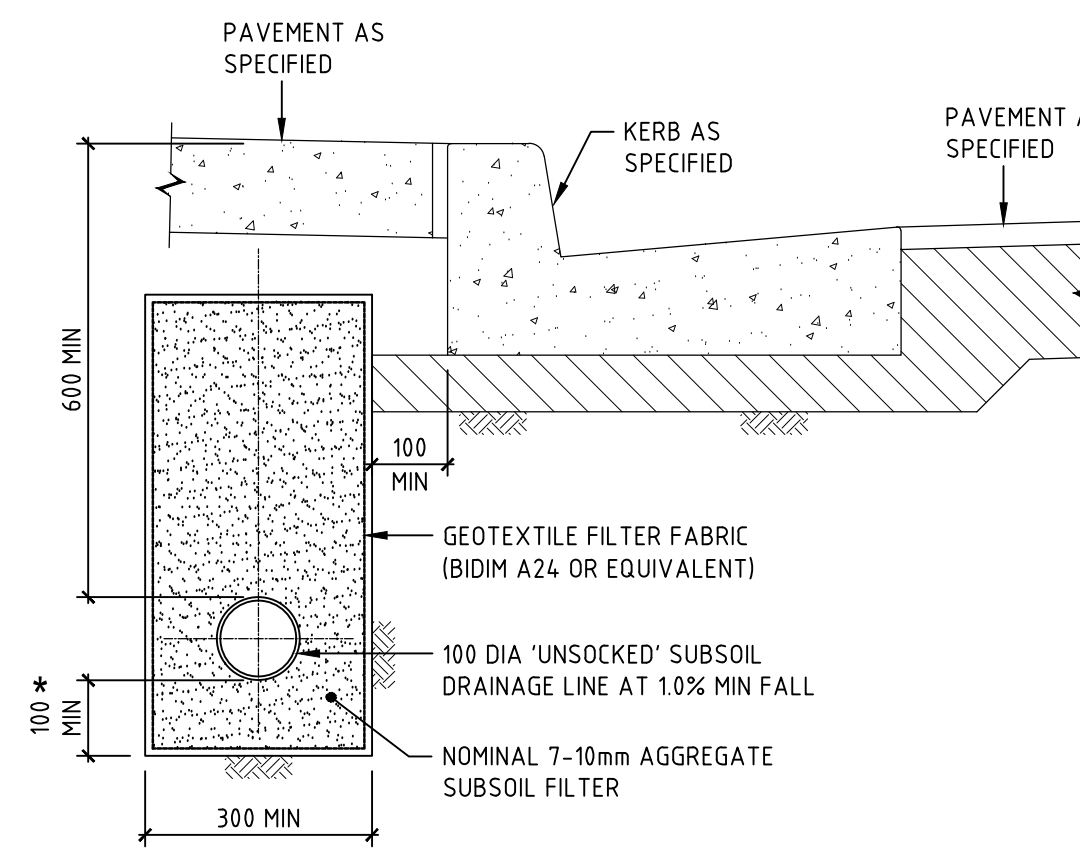


SIDE ELEVATION

- NOTES
1. WHEN POSITIONED IN STRAIGHT ALIGNMENT, STEP TO BE 400 WIDE.
 2. STAGGERED STEPS TO BE 200 WIDE, STEPS TO BE STAGGERED 200 CENTRE TO CENTRE FOR ALTERNATIVE STEPS.
 3. SPACING OF STEPS TO BE UNIFORM TO WITHIN ±8mm IN EACH PIT.

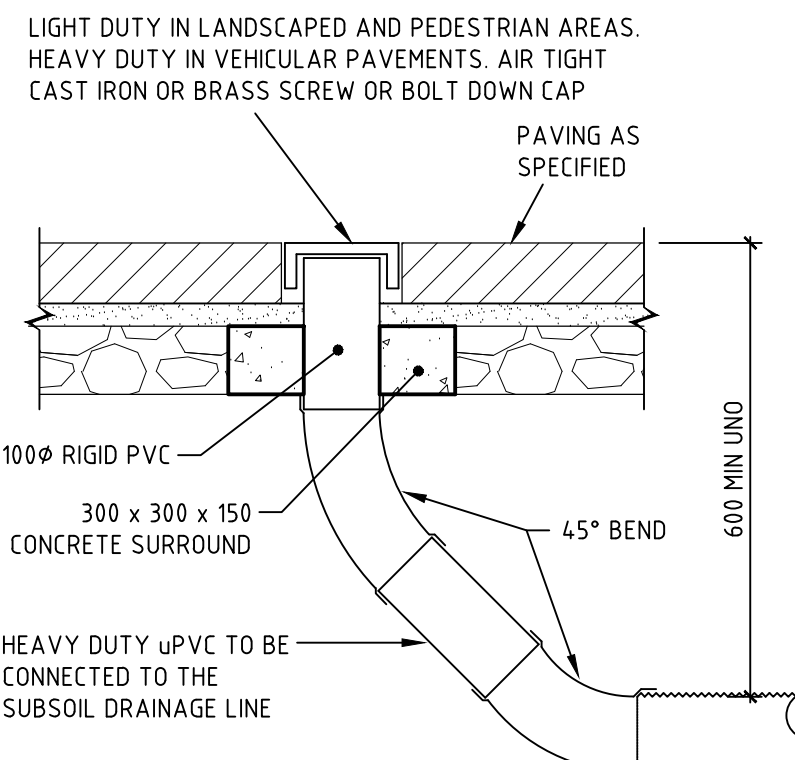
PIT ACCESS STEP DETAIL

SCALE 1:10



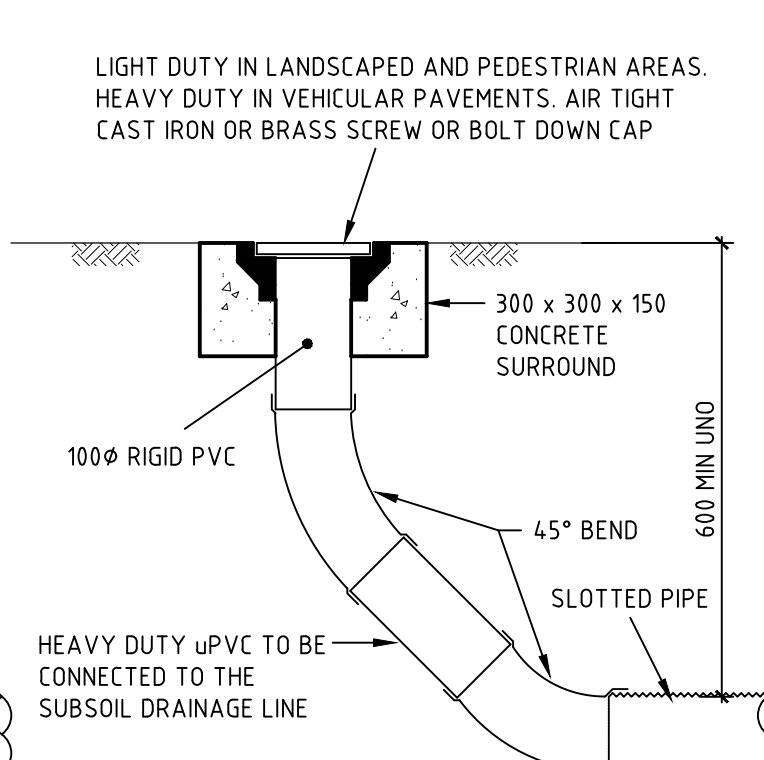
SUBSOIL BEHIND KERB

SCALE 1:10



FLUSHOUT RISER (FOR) IN PAVING BRICKS

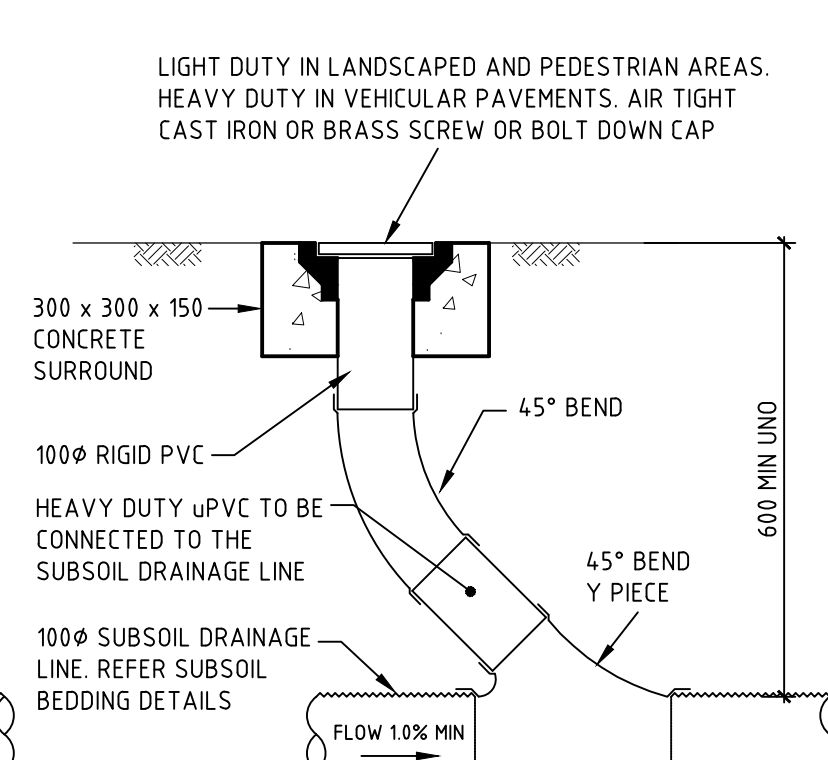
SCALE 1:10



FLUSHOUT RISER (FOR)

SCALE 1:10

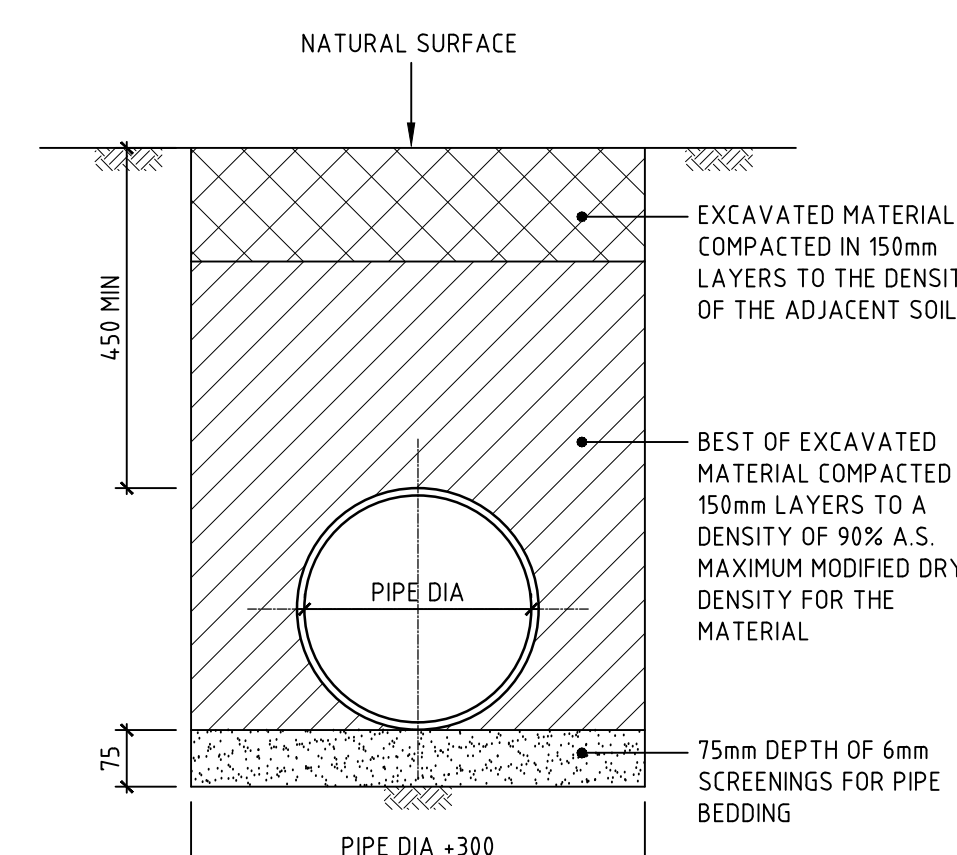
NOTE: SLOTTED RIGID PVC PIPE AND FITTINGS WITHIN DRAINAGE LAYER ONLY



INTERMEDIATE RISER

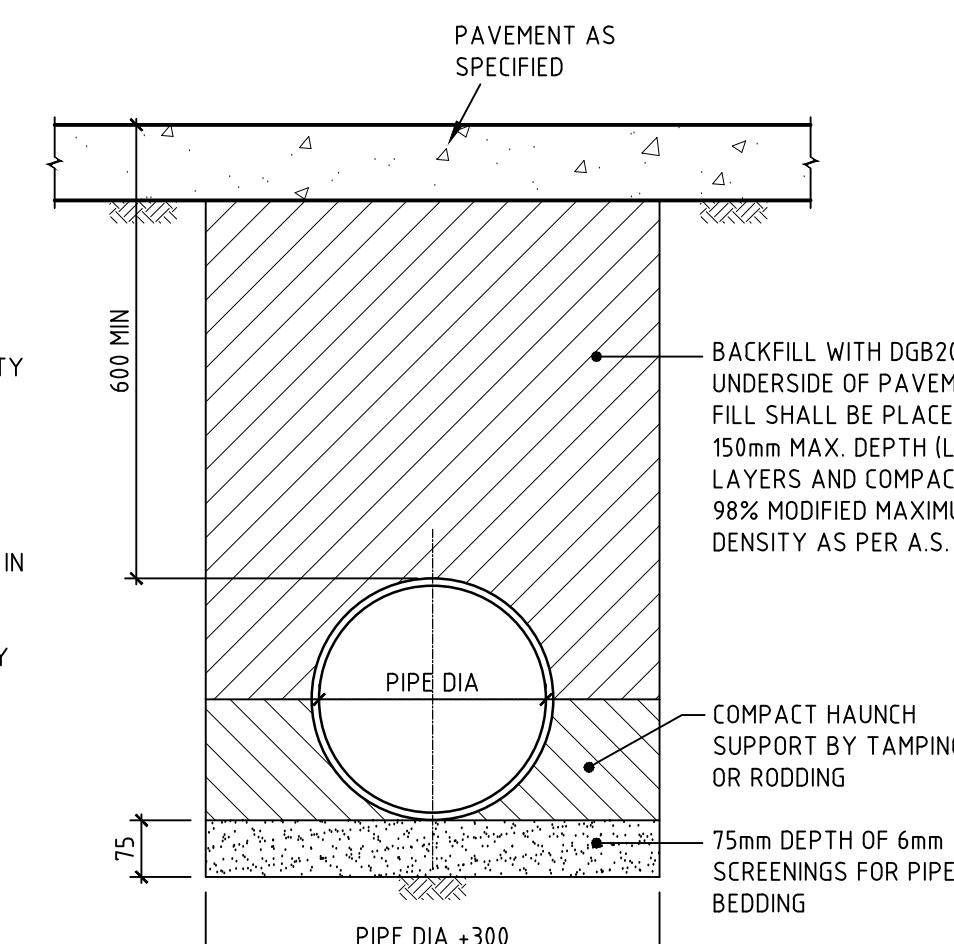
SCALE 1:10

NOTE: SLOTTED RIGID PVC PIPE AND FITTINGS MAY BE USED



PIPE LAYING DETAIL (ALL PIPES) UNDER LANDSCAPED AREAS

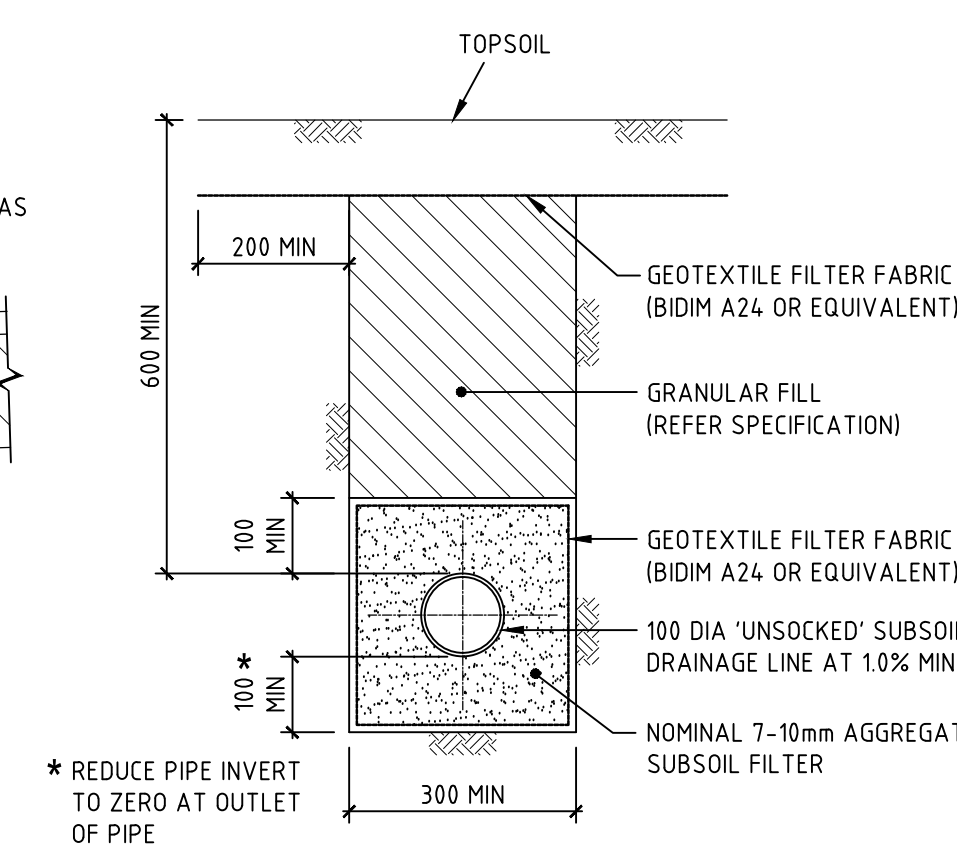
SCALE 1:10



PIPE LAYING DETAILS UNDER ALL PAVEMENTS

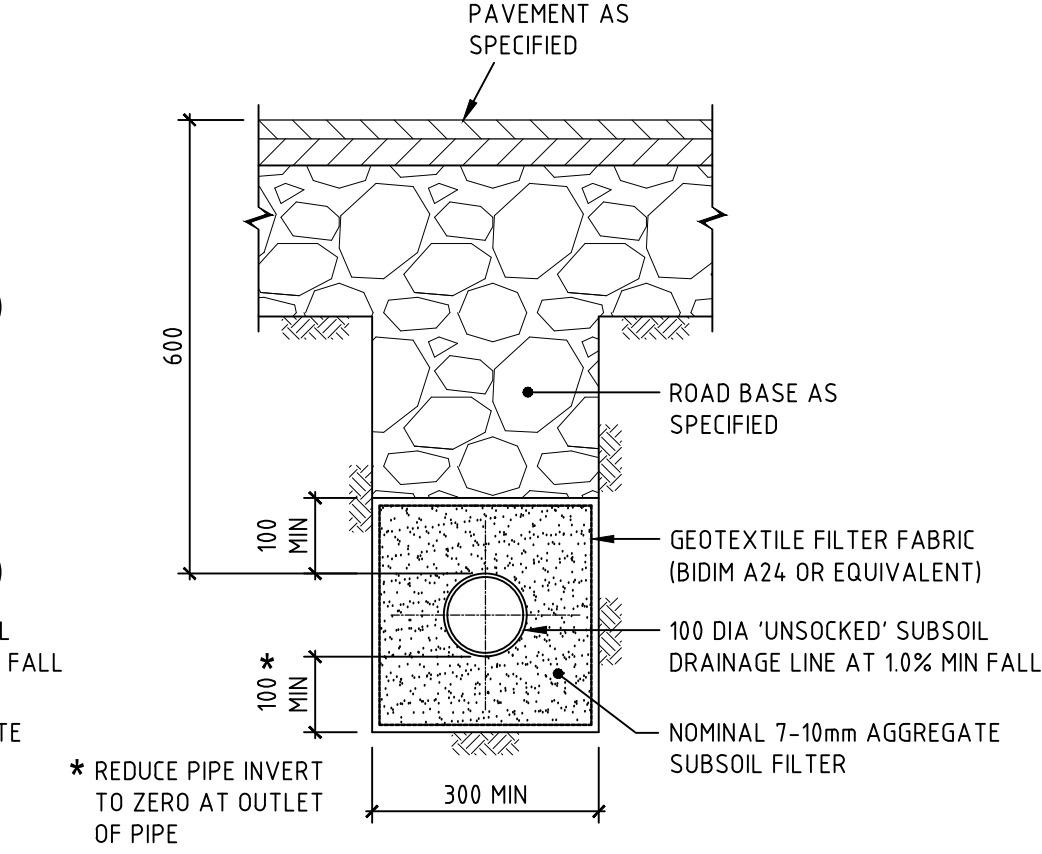
SCALE 1:10

NOTE: AVOID RUNNING CONSTRUCTION EQUIPMENT OVER THE PIPES UNTIL BACKFILL MATERIAL IS 300mm MIN. ABOVE CROWN OF PIPE.



SUBSOIL IN LANDSCAPED AREAS

SCALE 1:10



SUBSOIL IN PAVED AREAS

SCALE 1:10

COPYRIGHT
These drawings, plans and specifications and the copyright therein are the property of the Bonacci Group and must not be used, reproduced or copied wholly or in part without the written permission of the Bonacci Group.

All rights reserved.

P3	ISSUED FOR DISCUSSION	13.08.19	PA	-
P2	ISSUED FOR DA	07.09.18	PA	-
P1	ISSUED FOR DRAFT DA	17.08.18	PA	-

Rev	Description	Date	By	App
-----	-------------	------	----	-----

Rev	Description	Date	By	App
-----	-------------	------	----	-----



BONACCI GROUP Pty Ltd
ABN 42 060 332 345
Consulting Engineers, Structural - Civil - Infrastructure
Level 6, 37 York Street, Sydney, NSW 2000 Australia
Tel: +61 2 8247 8400 Fax: +61 2 8247 8444
sydney@bonaccigroup.com
www.bonaccigroup.com

Project Name
CATHOLIC HEALTH CARE LEWISHAM, NSW

Drawing Title
STORMWATER AND DRAINAGE DETAILS

DEVELOPMENT APPLICATION

Designed	SK	Project Director Approved	Date	North
Drawn	PA			
Scale		Project Ref	Drawing No	Rev
Date	Nov 2016	20 2175701C	C050	P3
Sheet				